

# MN Prevention Initiative Regions

## 87 Counties/11 Tribal Nations



Educate. Empower. Enrich.



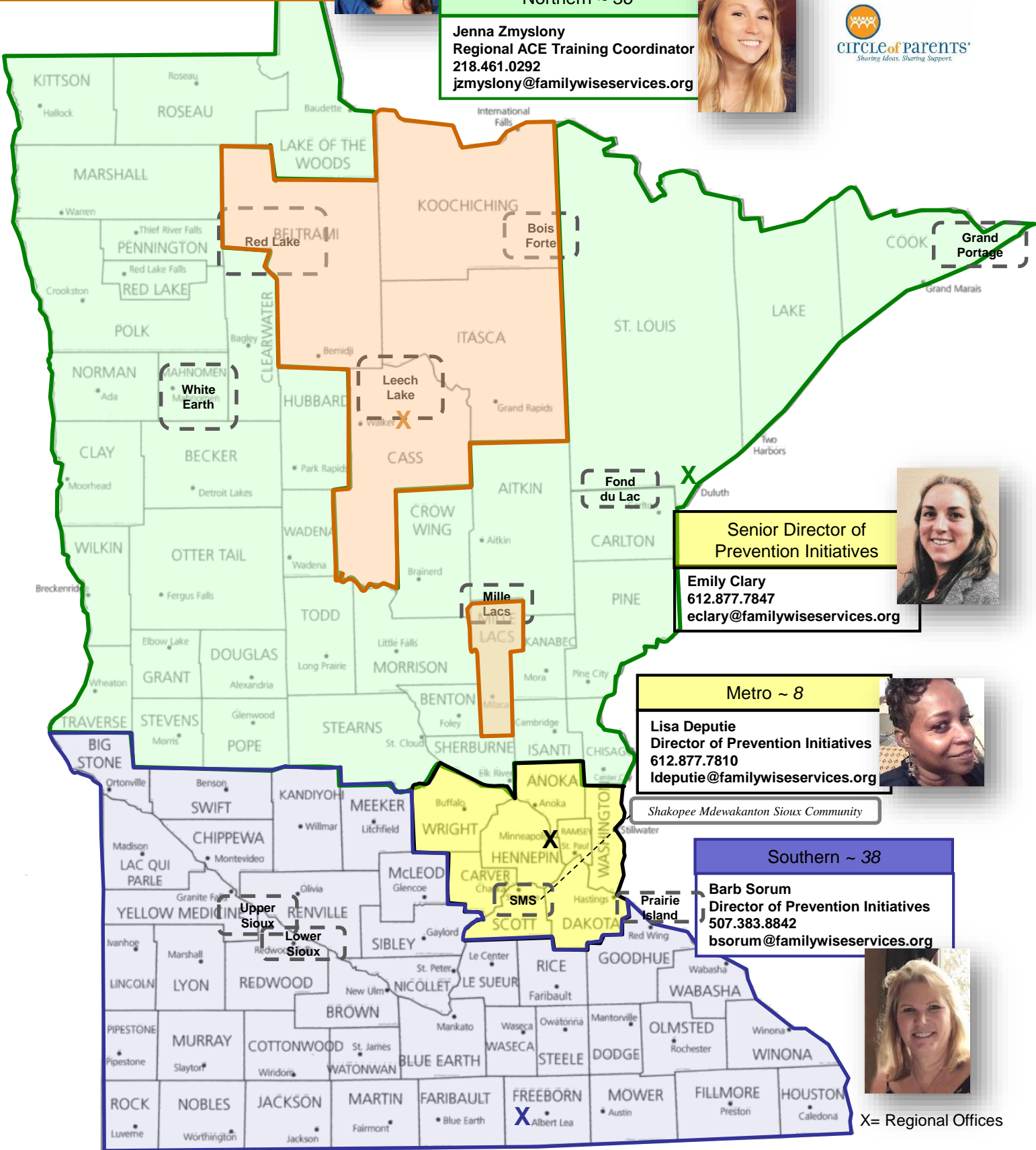
**Northern & Tribal ~ 5**

**Linsey McMurrin**  
 Director of Prevention Initiatives & Tribal Projects  
 218.270.7997  
 lmcmurrin@familywiseservices.org



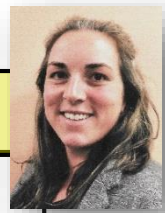
**Northern ~ 36**

**Jenna Zmyslony**  
 Regional ACE Training Coordinator  
 218.461.0292  
 jzmyslony@familywiseservices.org



**Senior Director of Prevention Initiatives**

**Emily Clary**  
 612.877.7847  
 eclary@familywiseservices.org



**Metro ~ 8**

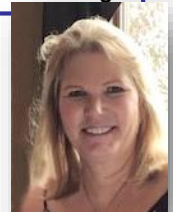
**Lisa Deputie**  
 Director of Prevention Initiatives  
 612.877.7810  
 ldeputie@familywiseservices.org

*Shakopee Mdewakanton Sioux Community*



**Southern ~ 38**

**Barb Sorum**  
 Director of Prevention Initiatives  
 507.383.8842  
 bsorum@familywiseservices.org



X= Regional Offices

# FamilyWise Services Regional Staff

## Southern MN

***Barb Sorum-38***

Big Stone  
Blue Earth  
Brown  
Chippewa  
Cottonwood  
Dodge  
Faribault  
Fillmore  
Freeborn  
Goodhue  
Houston  
Jackson  
Kandiyohi (PACT)  
Lac Qui Parle  
Le Sueur  
Lincoln  
Lyon  
Martin  
McLeod (PACT)  
Meeker (PACT)  
Mower  
Murray  
Nicollet  
Nobles  
Olmsted  
Pipestone  
Redwood  
Renville (PACT)  
Rice  
Rock  
Sibley  
Steele  
Swift  
Wabasha  
Waseca  
Watonwan  
Winona  
Yellow Medicine (PACT)

## Northern MN

***Linsey McMurrin-5***

Beltrami  
Cass  
Itasca  
Koochiching  
Mille Lacs

***Jenna Zmyslony-36***

Aitkin  
Becker  
Benton  
Carlton  
Chisago  
Clay  
Clearwater  
Cook  
Crow Wing  
Douglas  
Grant  
Hubbard  
Isanti  
Kanabec  
Kittson  
Lake  
Lake of the Woods  
Mahnomen  
Marshall  
Morrison  
Norman  
Otter Tail  
Pennington  
Pine  
Polk  
Pope  
Red Lake  
Roseau  
St. Louis  
Sherburne  
Stearns  
Stevens  
Todd  
Traverse  
Wadena  
Wilkin

## Metro Area

***Lisa Deputie-8***  
***Emily Clary-ACE Director***

Anoka  
Carver  
Dakota  
Hennepin  
Ramsey  
Scott  
Washington  
Wright